

2023 Annual Report



COLQUITT
REGIONAL
MEDICAL CENTER



Investing in community

from
our ceo

board of
trustees

Reflections on accomplishments and challenges of the past year inform the work and promise of the years to come. At Colquitt Regional Medical Center, we move forward with excitement about the many achievements of 2023 and the belief that our organizational health and investments in this community ultimately benefit the health and well-being of all those we serve.

A healthy community assures access to high-quality health services on a personal, community and system level and promotes a healthy lifestyle. It is no coincidence that you cannot spell community without unity, validating the collective efforts we have made — together with your support — to elevate your healthcare for a higher quality of life.

Last year, our workforce reached a high mark of 1,650 employees. Along with more than 130 medical staff members, this talented group of people comes together every day to live our mission, collaborating to make quality healthcare services available and accessible. Our growth in 2023 included new physical facilities and new or enhanced services. These enhancements and expansions reflect our commitment to keeping you close to home when needing care and to upholding not only the privilege but also the responsibility of being your local healthcare provider.

As you browse the pages of this report, you will meet primary care and specialty physicians who have joined our family of providers. You will learn more about the Ameris Bank Medical Education Center that opened in 2023 as an emerging hub of medical education in South Georgia, providing enhanced access to training and resources for employees, medical students and other clinical learners.

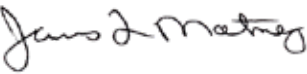
You will read about new service lines and programs, including the addition of gynecologic oncology with Margaret Ellison, MD, enabling women to stay closer to home for these specialty services. And our new six-bed inpatient pediatric unit helps us provide a higher level of care for children of all ages, lessening the need to travel.

With patient safety and compassionate care as top priorities, the efforts of our team members have not gone unnoticed. In 2023, Colquitt Regional received its 16th and 17th A's, Hospital Safety grades from The Leapfrog Group, recognizing performance in the prevention of medical errors, accidents and infections. In addition, we received the Human Experience (HX) Guardian of Excellence Award for 2023 by Press Ganey, reflecting exceptional performance in delivering the patient experience. You will read more about these and other recognitions in the following pages.

As CEO of Colquitt Regional, I am honored and blessed to represent this remarkably talented and dedicated group of people. I am always impressed with the caliber of care and caring, and I am awed and inspired by the opportunity to work with this team. I am also fortunate to work with a team of brilliant and discerning leaders who strive to balance the complexities of healthcare with the needs of all those we serve.

We are grateful to be part of this amazing community. We value our role as stewards of your healthcare resources and strive to make the best decisions for programs and services that help you get and stay healthy while sustaining the overall health of our system of care. It is a distinct privilege to care for the health needs of you and your family, and it is our unwavering responsibility to work tirelessly to meet those needs.

On behalf of our employees and physicians, thank you for your continued support and trust in Colquitt Regional Medical Center.

Sincerely,


James L. Matney
President and CEO
Colquitt Regional Medical Center



Richard E. Turner, Jr.
Chairman



Richard Bass
Treasurer



Maureen A. Yearta, Ed.D.
Secretary



**Howard Melton, MD, FACS,
FASMBS**



John Mark Mobley, Jr.



Johnny Brown



John Griffin



Justin Baker, MD



Joe P. Baker

impact on
our community

FY 2023 October 1, 2022 –
Sept. 30, 2023



6,475
inpatient
admissions



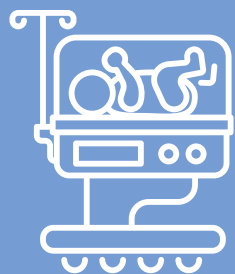
2,406
observation
patients



202,751
outpatient
physician visits



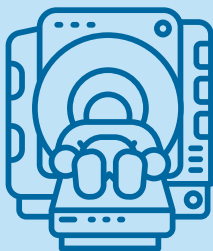
4,747
oncology
treatments



661
births



36,350
emergency
services visits



188,370
outpatient
diagnostic
visits



14,716
inpatient &
outpatient surgeries
& procedures

vision to reality

Ameris Bank Medical Education Center is a collaboration for the community

The Ameris Bank Medical Education Center is now open and bustling with activity. This 39,000-square-foot facility, located on the north side of the hospital campus, opened in November 2023 and is dedicated to the training, recruitment and retention of our current and future healthcare workforce. It will help staff and students acquire and hone the knowledge, skills and professional behaviors needed for a spectrum of career paths.

Home to Colquitt Regional Education Services, the first floor features four simulation rooms, a computer lab, the Matney Conference Center, a skills lab and classroom space. Simulation rooms are designed to mimic hospital rooms and are devoted to labor and delivery, medical/surgical, intensive care and trauma training. High-fidelity manikins can be programmed to respond to the learning environment and thereby train providers in best practices.

The center's second floor houses the Georgia South Family Medicine Residency Program and clinic, the Georgia South Psychiatry Residency Program and future clinic, and offices for affiliated physicians, faculty and staff.

"When we first started envisioning this education center, we wanted to build a facility not only for our employees but for the community and region at large," said Jim Matney, Colquitt Regional President and CEO. "Because of the generosity of Ameris Bank, along with numerous other donors throughout our community, we turned a vision into a reality."

The Education Center is available to healthcare students and professionals, including residents, physicians, nurses, paramedics and nurse assistants at Colquitt Regional and at partnering educational institutions.

"We have strong partnerships with local schools, such as Philadelphia College of Osteopathic Medicine, Southern Regional Technical College, the Colquitt County School System and more," said Matney. "One of our goals is to be a resource for the community and in turn, create a pipeline of healthcare workers that will have exposure to and experience within the industry from a young age."

Construction began on the new center in September 2022 with a \$2 million pledge by Ameris Bank through the Georgia HEART rural tax credit program. Georgia HEART allows residents to reallocate state tax dollars to qualified rural hospital organizations. With previous funds, Colquitt Regional has made facility infrastructure upgrades and service line additions, including the renovation and expansion of the Edwards Cancer Center and radiation oncology unit.

Along with Ameris Bank, signature donations were received from Colquitt Regional employees (\$250,000), hospital volunteers (\$150,000) and Trupti and Shamb Purohit (\$200,000). In addition, the Jill and Jim Matney family have pledged \$500,000 towards The Education Center. In total, over 300 donors have contributed to this building through Georgia HEART.

"The continued support for our health system is greatly acknowledged and appreciated," said Hospital Authority Chairman Richard E. Turner Jr. "This facility will have an enormous impact on those pursuing careers in the medical field not just in Moultrie but throughout South Georgia. Because of this elevated level of training, we will continue to expand access to high-quality healthcare to the patients of Colquitt Regional."

Members of the Colquitt County Hospital Authority, Colquitt Regional Medical Center administration, Colquitt Regional Medical Foundation board and representatives of Ameris Bank gathered on November 30, 2023, to cut the ribbon for the new building.



elevating
care for
women

Sweet beginnings
for 700 babies

Colquitt Regional’s Maternal Infant unit was the place for sweet beginnings during the 2023 calendar year. While past years have averaged around 650 newborn births, a new milestone was set with 700 births last year.

Colquitt Regional’s Maternal Infant unit provides antepartum, labor, delivery, postpartum and infant care with advanced equipment and a skilled nursing staff with extensive training in maternal and newborn care. Labor and delivery suites allow expectant mothers and their partners to remain in one comfortable location for the baby’s birth and post-birth care. Private postpartum suites, antepartum suites and operating suites for cesarean section deliveries complete the facilities available to expectant parents. And a neonatal stabilization unit stands ready to provide exceptional newborn care as needed.

Gynecologic oncology services close to home
Find care for gynecological cancers or complex conditions of the female pelvis

Women in Moultrie, South Georgia and North Florida can now access specialized care close to home for the diagnosis and treatment of cancers of the female reproductive system, as well as complex non-cancerous conditions. Gynecologic oncology is a subspecialty of obstetrics and gynecology focused on integrated care and treatment of health challenges such as pelvic masses, endometriosis, fibroids and cancers of the cervix, ovaries, uterus, vagina and vulva.

There are no screening tests for gynecological cancers except for cervical cancer, so it is essential for women to know the signs and symptoms and to act on them. While many signs of these cancers could also be symptoms of other ailments, it is important to see your healthcare provider for evaluation.

In May 2023, Colquitt Regional welcomed board-certified gynecologic oncologist Margaret Ellison, MD, with more than 20 years of specialized experience and a focus on minimally invasive management of gynecologic malignancies, radical pelvic surgery and reconstruction, robotic surgery, chemotherapy and radiation and hospice and palliative medicine. She employs the most advanced and promising new technologies and techniques, with a seamless blend of medical, surgical, radiation and pathology expertise to develop a personalized approach for your diagnosis and treatment. With offices in Moultrie, GA, and in Tallahassee, FL, care is convenient and close to home.

Services at the Edwards Cancer Center include friendly, high-quality laboratory services and centralized pathology for complete, accurate and timely diagnostic reports. Our in-house specialty pharmacy services support your treatment plan with prescribed chemotherapy, immunotherapy and the newer targeted therapy solutions, including oral oncolytics (pill form). Your patient navigator and care management team will help you navigate the treatment process and be sure you receive the support and services you need. Our financial counselor is available whenever you have questions about your insurance coverage, payment options or patient assistance programs.

A diagnosis of cancer is overwhelming, so we ensure a personalized treatment plan and timely care for our patients. Whether your journey includes surgery, chemotherapy, radiation or a combination of methods, you can expect compassionate, committed and cutting-edge care to help you live your best life during and after treatment while also staying close to home with family and community.



Margarett Ellison, MD, MHA, FCOG, FACS
Board certified in Gynecologic Oncology

Areas of Specialty

- Gynecologic Oncology (uterine, ovarian, cervical, vaginal, vulvar)
- Minimally invasive and robotic surgery
- Chemotherapy for gyn malignancies
- Endometriosis
- Fibroids
- Pelvic masses

Education

- Fellowship: Brown University/Women and Infant’s Hospital Gynecologic Oncology (Providence, RI)
- Residency: University of Alabama Obstetrics and Gynecology (Birmingham, AL)
- Medical School: Mercer University School of Medicine (Macon, GA)
- Undergraduate: Emory University (Atlanta, GA)

Prior to private practice, Dr. Ellison completed U.S. Army Officer basic training and served from 2001 until 2003 as Assistant Chief, Division of Gynecologic Oncology at Brooke Army Medical Center, Fort Sam Houston, TX. From January to June 2003, she served as a general surgeon for the 10th Combat Support Hospital in Operation Iraqi Freedom. In 2006, Dr. Ellison was promoted to the rank of Lieutenant Colonel, USAR.

She is dedicated to clinical research and has been published in several peer-reviewed journals, such as the *New England Journal of Medicine*. Dr. Ellison also holds a Master of Healthcare Administration from the University of Phoenix (Phoenix, AZ).

Location

Edwards Cancer Center
3131 South Main Street
Moultrie, GA 31768
229-890-3514



Women who experience these
persistent symptoms should see a
healthcare provider for evaluation:

- Vaginal bleeding after menopause
- Excessively heavy menstrual cycles
- Abnormal bleeding between periods
- Unexplained pelvic or abdominal pain, bloating or nausea
- Discharge or pain with intercourse
- Severe change in bowel or bladder habits
- A heavy feeling in the pelvis
- A sore or lump in your vulva
- Weight gain after menopause

expanding care for children



Inpatient pediatric unit makes care timely and convenient

Colquitt Regional's new six-bed inpatient pediatric unit opened in 2023 to provide the highest quality care to young patients in the community. The unit is staffed by a team of highly trained physicians and nurses focused on caring for children of all ages.

Patient rooms were designed with children in mind. Each has a unique theme that creates a comfortable and engaging environment, including a space adventure, a coral reef, a jungle, a backyard farm, a land of dinosaurs and a hot-air balloon flight. These fun, interactive designs help children engage and explore while receiving the care they need.

"Hospitalization can be a stressful and difficult time for children and their families," said Jim Matney, President and CEO. "That's why we've worked hard to design a space that is both welcoming and entertaining for families while featuring the newest technology needed to care for our pediatric patients."

The most common diagnoses we see include dehydration, asthma, influenza, appendicitis, urinary tract infections, gastroenteritis, pneumonia and viral infections. The new unit enables our providers to treat a large majority of conditions close to home and family.

"There will still be some cases where a child needs a higher level of care, and those patients will be transferred to other facilities," said Woodwin Weeks, DO, Pediatric Chairman. "But this addition will greatly decrease those circumstances."

Colquitt Regional's pediatric hospital medicine program was implemented in 2021 to reduce the number of children who require transfer. In addition to pediatric hospitalist physicians, nurses and respiratory therapists have received additional training in pediatrics and can care for patients with upgraded and specialized pediatric monitoring technology.

"It can be very challenging for parents when a child is transferred three or four hours away," said Hospital Authority Chairman Richard E. Turner Jr. "The opening of this new pediatric unit is a testament to Colquitt Regional's commitment to providing highly skilled, patient-centered care to all members of this community and the surrounding areas."

The unit is also an integral part of the training curriculum for medical residents with the Georgia South Family Medicine Residency Program. These residents complete pediatric rotations in the hospital and provide pediatric care in the clinic setting.

Dr. Anthony Adetomiwa, MD, and Nurse Brandi Delk, LPN, with one of the first patients of the new inpatient pediatric unit.

surgical residency program blossoms

Investing in the future of healthcare, in partnership with Emory University School of Medicine

A new partnership with Emory University School of Medicine provides hospital rotations and an opportunity to serve in a community-based setting for 12 surgical residents each year. These residents are in their third, fourth or fifth year of training, and the clinical rotations at Colquitt Regional will help them acquire expertise in patient management from pre-operative through post-operative care.

A milestone for graduate medical education here, the program aims to provide an exceptional clinical learning environment, dedicated physician advisors and a unique opportunity to experience medical practice in a rural hospital setting. Following the footsteps of the success of the Georgia South Family Medicine and Psychiatry Residency Programs, this general surgery partnership with Emory builds on a strategy to create a sustainable path that will protect access to healthcare for generations to come.

"We now have the chance to partner with one of the finest residency programs in the country," said Howard L. Melton, MD, general surgeon and site director. "I am proud that we will have a chance to demonstrate the skill and talent of rural Georgia."

Emory's program director, Jahnavi K. Srinivasan, MD, values a balanced curriculum where residents mature into skilled surgeons through a variety of clinical experiences.

"These collaborative relationships allow our surgical residents to truly understand what it is like to practice in rural communities," said Srinivasan.

Surgical resident group in partnership with Emory University School of Medicine. From left: Dr. Howard Melton, Dr. Anna Beth West (First surgical resident to rotate through Emory partnership), Dr. Amber Holt, Dr. William Stembridge



new providers

In our continuous effort to enhance your access to healthcare and expand services here, we are always looking to add new providers and specialties. These new names and faces joined the Colquitt Regional and Sterling Physician Group community of providers in 2023.



Nic Dodson, DPM
Podiatry



Adam Graham, MD
Hospital Medicine



Christine Lurie, DO
Obstetrics & Gynecology



Dresden Melton Soderstrom, MD
General & Bariatric Surgery



Clifton Thomas, MD
Hospital Medicine



Erin Dodson, DPM
Podiatry



Margarett Ellison, MD
Gynecologic Oncology



Maria Jasinskas, MD
Psychiatry



Venu Madhipatla, MD
*Anesthesiology /
Critical Care*



Lisa Rudolf-Watson, MD
Psychiatry



Govindaraj Venkatesh, MD
Cardiology



a warm
welcome

From left: Medina, Tresner,
Flowers, Edwards, Jim Matney
(CEO), Gramling, Krout, Ashraf

new residents

We are also excited to welcome our eighth class of residents to the Georgia South Family Medicine and our second class of residents to the Psychiatry Residency Programs, facilitating your healthcare for the future.

Christian Edwards, DO
Family Medicine

Shelby Flowers, DO
Family Medicine

Carol Medina, MD
Family Medicine

Allison Tresner, DO
Family Medicine

Rizwana Ashraf, MD
Psychiatry

Keith Gramling, DO
Psychiatry

Brandon Krout, MD
Psychiatry



hospital awards & recognition

Elevating your hospital experience

Colquitt Regional was one of 44 hospitals nationwide to receive the 2022 Human Experience (HX) Guardian of Excellence Award® by Press Ganey, the global leader in healthcare experience solutions and services. This recognition reflects performance in the top 5 percent of healthcare providers in delivering patient experience. Press Ganey works with more than 41,000 healthcare facilities in its mission to reduce patient suffering and enhance caregiver resilience to improve the overall safety, quality and experience of care.

“This award recognizes the camaraderie between physicians, administration and hospital staff that leads to increased communication and ultimately better patient care and outcomes,” said Andrew Cordista, MD, Chief of Staff.

Ensuring the highest standard of laboratory care

Colquitt Regional Laboratory Services has received accreditation from the College of American Pathologists (CAP). The accreditation process is designed to ensure patients’ highest standard of care. CAP inspectors reviewed laboratory records and quality control of procedures for the preceding two years as well as laboratory staff qualifications, equipment, facilities, safety program and record and overall management.

“We are happy to continue providing quality laboratory services and meet the needs of our growing clinical team,” said Cory Porteus, DO, Pathologist. “I am extremely proud of the dedication of our laboratory team. They strive to provide the best lab services to our patients and community.”



Enhancing care for moms and babies

The Joint Commission’s Maternal Levels of Care (MLC) Verification program, offered in collaboration with the American College of Obstetricians and Gynecologists (ACOG), has named Colquitt Regional as a Level II maternal care-verified facility.

A comprehensive review in October 2023 provided an objective assessment of our maternal care capabilities, expertise, equipment and resources based on a patient’s specific needs and risk level. Verification also confirms transfer agreements, should complications arise and the mother require a higher level of care. Hospitals seeking maternal verification, a voluntary decision, complete the site survey led by The Joint Commission every three years.

As a Level II facility, Colquitt Regional has demonstrated care for Level I and Level II patients. Level I includes basic care for low to moderate-risk pregnancies, demonstrating the ability to detect, stabilize and initiate management of unanticipated maternal-fetal or neonatal problems that may occur during the antepartum, intrapartum or postpartum period until the patient can be transferred to a facility with specialty maternal care. Level II also includes moderate to high-risk antepartum, intrapartum and postpartum conditions.

“This Level II verification is proof that the team in the Maternal Infant Unit is equipped to provide the best care possible for all mothers,” said Hospital Authority Chairman Richard E. Turner Jr.

A’s in patient safety

In 2023, Colquitt Regional received its 16th and 17th A’s, Hospital Safety Grades from The Leapfrog Group, an independent national watchdog organization. This distinction recognizes achievements in prioritizing patient safety by protecting patients from preventable harm and errors. The grading system is peer-reviewed, fully transparent and free to the public. Grades are updated twice annually, in the fall and spring.

The Leapfrog Group assigns grades A-B-C-D-F to general hospitals across the country based on over 30 national performance measures reflecting errors, accidents, injuries and infections, as well as systems in place to prevent harm.

“We are consistently evaluating safety practices and implementing new technologies and systems to ensure that we are delivering the safest care possible to our patients,” said Jim Matney, President and CEO.

Colquitt Regional also scored 91 percent or higher in the categories of nurse communication and doctor communication.

“Day after day, our dedicated employees carry out our mission of providing exceptional healthcare that exceeds expectations,” said Hospital Authority Chairman Richard E. Turner Jr. “We have set the highest standards when it comes to patient safety and our team rises to the occasion every day.”

leadership awards & recognition

The very essence of leadership Matney leads with heart, soul, vision and foresight

At its 2023 summer meeting, the Georgia Hospital Association (GHA) presented the prestigious W. Daniel Barker Leadership Award to Jim Matney, Colquitt Regional President and CEO. Matney was honored for his leadership and for his success in ensuring the vitality of the organization despite the many challenges of rural healthcare systems.

“Jim Matney is an outstanding leader who has put his heart and soul into ensuring the success of Colquitt Regional Medical Center,” said GHA President and CEO Earl Rogers. “Thanks to his vision, dedication and keen foresight, the hospital is in a place to continue to provide essential care to its community now and far into the future.”

The award recognizes an active Georgia hospital/health system leader who has made outstanding contributions to Georgia’s healthcare community, has developed an innovative approach to healthcare delivery and has provided meritorious service on behalf of the healthcare industry and/or GHA.

Three months later, Matney was named CEO of the Year by The Georgia Alliance of Community Hospitals at its 40th conference. This award recognizes a member CEO who embodies the values of conservative financial management, prioritizing patient safety and wellness and demonstrating a deep commitment to the communities they serve.

“We are proud to recognize Jim Matney of Colquitt Regional Medical Center as the 2023 CEO of the Year for his leadership and his commitment to his hospital, their patients and employees and their community,” said Monty Veazey, Chairman and CEO of the Alliance.

Matney has been instrumental in the growth of hospital facilities, technologies, medical education and service lines. He led the hospital through a multi-million-dollar expansion in 2014, acquired a skilled nursing facility and implemented state-of-the-art technologies such as the da Vinci Surgical Robot, 3T MRI, Mako Surgical Robot and the Myospect heart scanner.

He has also helped recruit specialists to bring much-needed service lines to the community. The workforce has doubled in size, and new services include radiation therapy, gynecologic oncology, plastic and reconstructive surgery, psychiatry, rheumatology and behavioral health services.

During the COVID-19 pandemic and throughout his tenure, Matney continuously works to ensure that patient safety is the top priority, as reflected in the hospital’s 17 “A” Patient Safety Grades from The Leapfrog Group. Numerous other recognitions include being named a Top Rural Hospital (twice), the Press Ganey Human Experience (HX) Guardian of Excellence Award®, Pathway to Excellence designation by the American Nurses Credentialing Center, Baldrige Commitment Award, designation as a Comprehensive Center under the Metabolic and Bariatric Surgery Accreditation and Quality Improvement Program (MBSAQIP) and Get With the Guidelines – Stroke Silver Plus Quality Award from the American Heart Association.

Matney has worked tirelessly to address workforce shortages and medical needs in rural Southwest Georgia. He was instrumental in establishing the Philadelphia College of Osteopathic Medicine in Moultrie, where the next generation of rural practitioners are training. In addition, the Georgia South Family Medicine Residency and Psychiatry Residency Programs, established under Matney’s leadership, have helped to create a pipeline for rural healthcare professionals.

“I am extremely humbled to receive these great honors,” said Matney. “Although my career spans three decades, the past 12 years at Colquitt Regional have been full of growth, excitement and some challenges. Our organization has grown a lot together, and I absolutely could not have done my job or received these awards without the wonderful, dedicated employees at Colquitt Regional. I share in this success with them.”

When asked about Matney’s impact, Hospital Authority Chairman Richard E. Turner Jr. said, “We are fortunate to have Jim as the President and CEO of Colquitt Regional. We have reached new heights under his tenure, and he is the embodiment of vision, determination and leadership.”

Dena Zinker, CNO, appointed to state board Georgia Board of Nursing welcomes new leadership

Gov. Brian Kemp recently appointed Dena Zinker, MSN, RN, NE-BC, FACHE, Chief Nursing Officer and Vice President of Patient Services, to the Georgia Board of Nursing (GBON) for a three-year term.

GBON is the regulatory agency for licensed practical nurses, registered professional nurses, advanced practice registered nurses and all nursing education programs. The Board is responsible for developing rules and regulations that set standards for nursing practice and education, provide the minimum qualifications for licensure and ensure due process and public protection through the disciplinary process.

“Dena is a true leader and will be a tremendous asset to the Georgia Board of Nursing,” said Jim Matney, President and CEO. “I commend Governor Kemp for his recognition of her unwavering commitment to nursing and the healthcare industry.”

After joining Colquitt Regional as a clinical coordinator in 2002, Zinker served in director roles for the ICU, respiratory care and emergency services. She was named Chief Nursing Officer in 2012 and Vice President of Patient Services in 2013. She has been integral to the implementation of new service lines, safety protocols and procedures. She helped develop the first clinical ladder for nursing employees, giving direct-care nurses a way to advance their careers while remaining in patient care. In 2020, Colquitt Regional became the fifth hospital, and first rural hospital, to receive the American Nurses Credentialing Center Pathway to Excellence designation.

“Dena is a fierce advocate for our nursing staff,” said Hospital Authority Chairman Richard E. Turner Jr., “She is not only invested in the prosperity of our health system, but she is equally concerned with the well-being of our nursing staff and ensuring that they receive the resources and training necessary to set them up for success, both at the bedside and in their professional development.”



employee awards & recognition

Recognizing and celebrating the contributions, efforts and achievements of our employees are cornerstones of our workplace culture at Colquitt Regional. Recognition not only serves as validation of individual and group efforts, skills and abilities but also fosters an environment where employees feel supported and valued. Congratulations to these team members for receiving awards in 2023.

daisy winners



Tabetha Calloway, LPN
Fifth Floor
Surgical/Orthopedics
January 2023



Artevia Brown, RN
Senior Care &
Rehabilitation
March 2023



Jamie Anderson, RN
Intensive Care Unit
May 2023



Brandi Delk, LPN
Fourth Floor
Medical/Pediatrics
July 2023



Denise Hill, LPN
Psychiatry
September 2023



Tanada McKinnon, RN
Fifth Floor
Surgical/Orthopedics
December 2023

team daisy winner
Emergency Department



2023 employee of the year

Lauren Cox, RN
Emergency Department



heart & hands winner



Monica Irvin, CNA
Fifth Floor
Surgical/Orthopedics

PHIL winner



Anna Jones, RRT
Respiratory

2023 employees of the month



Susie Walden, CHAA, CPAR, PAS
Patient Access
January



Katie Justice, RN, CURN
Urology
February



Nicholas Starkey, PharmD
Pharmacy
March



Christie Johnson, RN
Hospice
April



Lisa Bynum
Senior Care &
Rehabilitation
May



James Davis, PTA
Vereen Rehabilitation
Center
June



Gina McDonald
Foundation
July



Lauren Cox, RN
Emergency
Services
August



Stella Wingate, PT, DPT, ATRIC
Vereen Rehabilitation
Center
September



Lacey Zeigler, LPN
Fourth Floor
October



Pamela Chapman, RT(R)(CT)
Diagnostic Imaging
November



Michelle Tramel
Environmental Services
December

financials

FY 2023 October 1, 2022 –
Sept. 30, 2023

net patient
revenue

\$231,567,879



uncollectable debt

\$41,301,658

depreciation
& amortization

\$15,516,248



operating expenses

\$227,826,066



total growth in net assets

\$27,814,362

total assets

\$284,199,491



salaries

\$86,942,670

other/non-operating
income

\$16,777,168

uncollectable/
discounted care

\$2,510,019

contributions for
property acquisitions

\$10,112,176

total payroll & benefits

\$108,416,261



interest expense

\$1,537,169



charity & indigent care

\$6,064,052

awards & recognition

Humanitarian of the Year

Hugh B. Ward, DMin, was named the 2023 recipient of the Walter E. Harrison, Jr., MD, Humanitarian Award at the annual Colquitt Regional Medical Foundation Love Light ceremony. This award, named in honor of the late Dr. Walter E. Harrison, Jr., is presented annually to an individual health care worker who demonstrates a commitment to compassionate health care service and community outreach.

Ward’s first act of service with the hospital was when he was appointed as a Colquitt County Hospital Authority Trustee in 2005. He then joined the Colquitt Regional team officially in 2009 as the hospital chaplain.

Ward has been described as a “selfless person who often interrupts his personal schedule to hurry to the side of a person in need of comfort.” It was also said that “he meets people where they are and ministers to their spiritual and physical needs which is so important to their healing.”

“Although he is not a clinician, Hugh has become an essential part of our organization and an integral member of our care team,” said Colquitt Regional President and CEO Jim Matney. “As hospital chaplain, he has provided guidance and counsel for thousands of patients, family members, employees and countless others. We are so grateful he is part of the Colquitt Regional family and for his tireless dedication to our organization. He is tremendously worthy of this great honor.”

Notably during his tenure, Ward established the Colquitt Regional Medical Foundation Chaplain’s Fund to assist low-income patients who need home healthcare equipment, transportation, medicine and other essential needs.

Humanitarian Award Winner,
Hugh B. Ward, DMin

From left: Michael Harrison,
son of Walter E. Harrison Jr.,
Jim Matney, President & CEO,
Hugh Ward, Dr. D.W. Adcock,
close friend to Hugh Ward
and former physician at
Colquitt Regional



Volunteer of the Year

Donna Lee was named Volunteer of the Year. Donna has volunteered with Colquitt Regional since February 2018.

Since then, she has volunteered over 1000 hours of her time! She currently serves in the Edwards Cancer Center and Hospice, where she works with the staff and offers a calming presence to patients and families. Donna has previously volunteered with Pharmacy and Outpatient Registration, and she is always willing to fill in where needed. Donna loves the volunteer family she has found while serving at Colquitt Regional. When asked what inspired her to volunteer at Colquitt Regional, she said, “I wanted to give back. When my husband was sick, so much was done to help us. I feel this is what the Lord wants me to do.”

86
total volunteers
—
11,123
total volunteer
hours served

foundation
scholarships
by the
numbers

\$62,000
scholarships
—
\$9,500
teacher grants

\$71,500
total

“For years, we have had a scholarship program to encourage students to pursue careers in healthcare,” said Colquitt Regional President & CEO Jim Matney. “I am proud that we have been able to expand that program to include current employees at Colquitt Regional and teachers who will use these additional resources to increase exposure and access to STEM activities and projects for their students.”



ways to give

Colquitt Regional Medical Foundation

As a not-for-profit community hospital, Colquitt Regional Medical Center relies on the generosity of donors to fulfill our mission. Your support enhances patient care by funding new technologies, upgraded facilities and health education and prevention opportunities for the community. Every gift, individually and collectively, helps us provide safer, better care for every patient we serve.

Colquitt Regional Medical Center is essential to a strong, thriving community, along with our churches, schools and local businesses. A gift to the Colquitt Regional Medical Foundation is an exceptional way to invest in our community ... in your community.

Giving Levels

Every gift, large or small, is vital and appreciated -- whether it's a one-time donation, an annual contribution or a planned gift. The Foundation has created these Giving Levels to help recognize your support.



Founders Society

These compassionate and generous individuals have made a one-time gift or pledge of \$10,000 or more to the Colquitt Regional Medical Foundation. Founders receive lifetime recognition.



Business Partners

Businesses and organizations give generously to the Foundation to ensure the future of our medical community and economic growth. Business partners have made a one-time gift or pledge of \$10,000 or more to Colquitt Regional Medical Foundation. Business Partners receive lifetime recognition.



1939 Society

The Society, named to honor the founding year of Colquitt County's first public hospital, continues the tradition of those who saw an urgent need and met the challenge. We recognize donors for annual gifts of \$100 or more as members of our 1939 Society Annual Giving Club. These donors also receive annual lobby recognition and are listed in the Annual Report.

For more information contact:
Nicole Gilbert, Director of Foundation or Gina McDonald, Foundation Project Manager
229-890-3416

other ways to give



Georgia HEART Rural Tax Credit Program

The HEART Program is a remarkable and brilliant opportunity provided to Georgians by our elected officials. We are the only state in the nation whose taxpayers can financially support the state's rural hospitals -- at no cost! You can support essential improvements to health care in our community by contributing to Colquitt Regional through the Georgia HEART program, in exchange for a 100% Georgia income tax credit.



Planned Gifts

Planned gifts empower you to leave a legacy to support Colquitt Regional Medical Center. By designating life insurance or naming Colquitt Regional Medical Foundation as a beneficiary in your estate plan, your gift to our Foundation will have benefits now and in the future.



Gifts of Remembrance

Donors may designate any size gift to the Foundation in honor or memory of a loved one, and special gift acknowledgments are provided to the family or individual you wish to remember. Gifts can be made throughout the year or annually during our holiday Love Light season. All contributions to the Colquitt Regional Medical Foundation are tax-deductible. In addition, we offer several unique commemorative gift opportunities. For example, with a \$100 donation, donors may purchase a brick paver in the Kate Jeter Serenity Garden, providing a meaningful and lasting way to show appreciation to a loved one.

our donors



Employees of Colquitt Regional

Foundation Donors

1939 SOCIETY

The Society, named after the founding year of Colquitt County’s first public hospital, continues the tradition of those who saw a need and met the challenges of healthcare access in our rural community.

We wish to recognize these donors for their annual gift of \$100 or more given to Colquitt Regional Medical Foundation and are grateful for their support in 2023! Thank you for your generosity!

2023 Diamond (\$5,000+)

Debbie and Robert Brown, MD
Colquitt Regional Employees
Colquitt Regional Volunteers
Diane and Don Horne, Jr.
Rosalind and Jimmy Jeter
Jeter and Jeter
Mr. and Mrs. Daniel D. Kidder
Jill and Jim Matney
Mr. and Mrs. Michael J. McLean
Trupti and Shamb Purohit
Taylor Benefit Resource, Inc.
TMPartners, PLLC
United Way of Colquitt County Inc.
Vereen Family Foundation
Waldo DeLoache Charitable Foundation, Inc.

2023 Sapphire (\$2,500)

Alexander & Vann, LLP
Samantha and Steve Allen
Ameris Bank
Bank of America
Julie and Andy Bhavnani
Meg and Bill Bishop
Cannon Financial Strategists
Christine and Matthew Clifton
Davis Family Farms
DeMott Enterprises, Inc.
Draffin & Tucker, LLP
First National Bank of Moultrie
Nicole Lowry Gilbert
InterMed
Network Technology Solutions, LLC
Beckie and Shain Nowland
Sarah Nuzzo
Pentas Wealth Management, LLC
Dr. Lisa Rudolph-Watson and Mr. Benjamin Watson
Sellers Dorsey & Associates LLC
James Sizemore and David WM. Spence
State Farm Foundation
Sunbelt Transfers, LLC
UltraGroup Healthcare
Whelchel & Carlton, LLP
Wilco Electric Company, LLC

2023 Emerald (\$1,500)

Anesthesia Management Solutions
Ashley’s Business Solutions
Mr. and Mrs. C. Victor Beadles
Donna and Michael Brady
Broadleaf Contracting Inc.
Bull Durham Insurance & Investments, INC
Jared Cardwell, MD
Heather Champion

Dr. Nicholas Dodson
Cindi and Paul Everett
Megan and Gates Ford
Jim Hall
Karen G. Hart
Hurst Boiler & Welding Co., Inc.
iVita Financial
Dawn and Scott Johns
Jessica and Kent Jordan
Dr. Michael A. Magat
Management Services Network, LLC
Patti and Stewart Merdian
Mobley Gin Company
Osceola Supply, Inc.
Melanie and Claude Owens
Tammy Redd
Toni Leigh and James Riddle
Sean C. Sauls
Joann Sloan
Ryan Stovall
TelaGen, LLC
The First, AN.BA.
Becca and Richie Turner
United Linen Services
Valdosta Mechanical Company, Inc.
Sarah Walls
Dottie and Hugh B. Ward, DMIN
Woodwin Weeks, DO
Darlene and Eugene Zebley
Dena and Jimmy Zinker

2023 Platinum (\$1,000)

Ace Industries
Melinda Allegood
Edith Ann Brunty
Lee Bruttomesso
Stephanie Causbey
CL & TL Enterprises, LLC
Sandra Michelle Cook
Whitney and Greg Costin
Gale and Dan Couch
Vivian and Donald Crews
Isha Denegall
Lewis Douglas
Catie Duskin, DO
ENCO Group, Inc.
First Presbyterian Church
Arthur J. Gallagher
Rita and Shane Gay
Kelly Goff
Hazel Hill
Ron Hutchins
Christie Johnson
Craig Kirkland
Kayla and Josh Long
Diane and Jim Lowry
Gina and Bryan McDonald
Savannah and Ashley McGowan

Chris and Melissa Medders
Mindray
Judy and Mark Mobley
Moultrie First Church of the Nazarene
Tammy Murphy
Karen Newberry
Bruce Norton Properties, LLC
PCOM South Georgia
Hannah Hancock Pitts
Patricia Powell
Dr. and Mrs. Billy Ray Price
Lara and Scott Price
Jessica and Jeffery Rivenbark
Denise and Scott Romanowski
Robin and Alex Shivers
Siemens
Southern Regional Technical College
Gennie Spears
Ellen Sutton
Senator Sam and Emily Watson
Jana and Ben Wiggins
Amy Williams
Michael Wyche

2023 Gold (\$500)

Ron and Heather Adams
Melva Anderson
Amanda Anderson
Dimitra Anderson
Jamie Alison Anderson
Sheila Argent
Clarence Arnold
Christy Baker
Lori Baldy
Barefoot Cattle Company
Michael Barnes
Susan Bass
Lynsey Bell
Kathy L. Bennett
Melissia Bennett
Brian Bennett
Frances P. Benson
Donna and Chip Blalock
Ashley L. Blalock
Brooke Blease
Jimmy Bloodworth
Terry Bowen
Becky Bozeman
Kim Brinson
Leslie Roxanne Brooks
Susan Brown
Tonya and Bert Brown
Melgena Budzinsky
Ashley Burt
Laura and Jacob Calloway
Rep. Chas and Beth Cannon
Melissa E. Cardwell, DO
Cumberland Group
Justin Carroll
Pamela Chapman
Jillian Chestnutt
Cintas
Faye Clark
Javon Clark
Wanda Claxton
Cindy L. Coney
Katie W. Copeland
Holly Corona
Dean Cosmos
Michelle Covington
Kim Croft
Renee Crosby

Dale Cutshaw
Miranda Dalton
Roy Davis
Melissa Dell
Morgan Deloach
Chamagne DeSalvo
Beverly Dolweck
Laura Durrence
Courtney and J. Davis Edwards
Renee Ellenberg
Sheila M. Erving
Anna Faircloth
Shelby Fincher
Sandy K. Fletcher
Kimberly Forsyth
Cassidy Fowler
Ida Gentry
Angie Kramer George
Denna Gibbs
Kellie Giddens
Emily Gimm
Matthew Gould
Nancy and Doyle Grantham
Randall Green
Jessica and Scotty Green
Kelly Griffin
Henry G. Griffith
James Gurley
Buffy Hall
Taylor Hall
Latoya Harris
Debra Hayes
Timothy Henry
Henry Schein
Alexis Hernandez
Jessica Herrin
Debbie R. Herring
Kim Herrington
Mandy Hobby
Rebecca Jo Hodnett
Holman Supply Company
Lisa E. Holsclaw
Lottie S. Houston
Jordan Howell
Shawn Howell
Shirley Hunt
Eddie Jefferson
Carmen Diane Johnston
Sandra Y. Jordan
Katie Justice
Kaycee Kane
Carrie and Judd Lasseter
Christina Lee
Stephanie Leonard
Loryn Lewis
Mary Margaret Lewis
Pat Littleton
Brittany MacDonald
Gary Mackie
Magnolia Manor, Inc.
Ruby Martinez
Michele M. Masterson
Terry C. McMillan
Anna McMurphy
Linda Marie Mead
April Miller
Alisa Mobley
Mobley Greenhouse, Inc.
Pellie and Gadston Moore
Michelle Morrell
Nora B. Morris
Moultrie Junior Woman’s Club, Inc.
Javonna Murphy
Stacey Myrick

Marilyn and Michael Nixon
Sydney Pendleton
Cheryl Phillips
Jessica Anne Plymel
Dr. and Mrs. Frederick G. Powell
James Purcell
Becky L. Queen
RGL Associates
Sean Richardson
Danielle Richardson
Sheila M. Ridley
Gayle L. Russell
Beth Sammons
Melinda Sanderson
Janet Saunders
Tony Sheffield
Sabrina J. Shumans
Ken Sikes
Leah Sloan
Buffie Marie Slocumb
Brandon Smith
James Gregory Souders
Dianne Ruis Sprunger
Morgan Sprunger
Angela Stewart
Scottie Strickland
Chris Stroh
Trish Sutherland
Frederick Swanston
Dr. and Mrs. Gary Swartzentruber
Amanda M. Taylor
Lynn Thomas
Hayley Thompson
Robin Tillman
Janet Tillman
Jackie Tolliver
Leslie Tyson
Stacie Ussery
Julie Howell Vaughan
Marsha H. Vick
WALB
Brittney Walker
Rex Warren
Lamar Weeks
Amy Weeks
Shana Rae and Mark Wertz
Peggy and Timothy Whitley
Karen Wilkes
Rosemary Williams
Willie Willis
Kelley Wingate
Stella and Eric Wingate
Stephanie S. Withrow
Sochia Wood
Cristy and Chris Woodell
Jeffary Wooden
Wendy and Dave Wyatt
Karen Yoder

2023 Silver (\$250)

Julio Alba
Angelie Massey Alderman
Lesley Anderson
Michael Arenas
Jenny Atkinson
Karen Bailey
Hope Barber
Maxine Barge
Lei-Ann Barnes
Bay Free Will Baptist Church
Casey Jo Bennett
Adrienne Bentley
Nikki Blackwell

Kambria Blakely
Ashley Bowens
Janna Leigh Boyer
Tiffany Breland
Lisa and Johnny Brown
Terrance Brown
Tiffany N. Brown
Anna Brown
Sheila Brown
Johnny Brown III Concrete
Donna Bryant
Ashley Bryant
Lakyn Buckner
Raymond Buckner
Britini Bullard
Jayme Burch
Nicole Burgess
Crista Burke-McMurphy
LaWanda Butler
Eric L. Butler
Anna Rae Byrd
Tabetha Calloway
Shantorria Campbell
Renee Campbell
Tammie Carper
Katherine Carter
Ashley Carter
Misti Carter
Karen Castillo
Maria Castillo
Rayford D. Causey
Tammie Cawley
Jessica R. Chapman
Lisa Childs
Jasmine Clark
Casey Clark
Lori Clements
Buster Clements
Clinical Measurements, Inc.
Kristoff D. Cohan
Nakita Cole
Kenya Collins
Colquitt Shopper
Pamela Conner
Hannah Cooper
Amanda Cooper
Lonnie Cooper
Ta’Nievia Corbin
Countryside Subdivision
Lauren Cox
Linda Crosby
Melissa Cruz
Steven Culpepper
Toni C. Daniels
Cheryl Dato
Sherolyn R. Davis
Regina Davis
Mary K. Carroll
Stevie L. Deal
Sharon DeBruce
Brij Delada
Brandi Delk
Brenda Depaz
Jaclyn K. Donovan
Jessica Dozier
Dorrie Drinkwater
Steven Dryden
Felicia Dunbar
Bernadette Duncan
Shabreka Duncan
Edward Jones
Jessica Ortega Edwards
EnableComp
Wayne C. Evans

Pamela Evans	Joanne Jones	Myrna Portillo	Terri Watts	Kaitlyn Brinson	Loraine Faye Gershom	Katheen L. Loy	Janie Roseborough
Emily and Griffin Evans Jr.	Danice Kennedy	Julie and Cole Posey	Mary Weaver	Felecia Brockington	Melinda Gibbs	Lester Loy	The Rothenberg Family
Ivy J. Evers	Kimberly Kersey	Kimberly Powell	Lacey Webb	Magic Brooks	Priscilla Gilbert	Joe Loy	Bertha C. Rowell
Tammy L. Exum	Jordan and Tyler Key	Mona and Steve Powell	Theresa Webb	Alma Denise Brown	Brittany Godwin	Melody L. Mallard	Classie Sailor
John Fillingame	Linda Michelle Kick	Caitlin Propst	Debra Weeks	Ronald Brown	Jenifer Goins	Henry Matney	Felicia Sanders
Nancy Fitch	Erica Kimbrell	Jessica Purvis	Wellspring Med Spa, LLC	Jesika Brown	Jennifer Gonzalez	Mr. and Mrs. Lawton Matthews	Wells Scott
Amanda Fleury	Holly and Kevin King	Quadax, Inc.	Kristi and Brandon Whitaker	Heather Bryant	Maria Gonzalez Lopez	Nancy and Hugh Matthews	Kelly Sheppard
John S. Flowers	Sheronica Kinsey	Melinda Rahn	Chelsea Whitaker	Betty Bryant	Brittany Gordon	Carla Matyas	Ann Marie Shugart
Garland Folsom	Kristen Kiser	Reliable Data Products	Lori White	Randy and Mary Buckner	Miesha Grant	Bonnie May	Ashley Shumate
Kimberly D. Ford	Ashley Lane	Kristin C. Revell	Christine and John Whitney	Alexis Burks	Jenny M. Gray	Morgan Mayer	Isabel Simmons
James D. Forlini	Savannah Lanier	Vanessa Richardson	Patrice Williams	Deloris Butler	Deloris Green	Mckenzie Maynard	Morgan Singleton
Mitchell K. Fountain	Thomas Laseter	Donald Keith Richardson	Keniyato Williams	Heather Caldwell	Matthew Hale	Shaquila McCain	Monica Smith
Victoria Elizabeth Gallagher	Lasseter Motor Company	Kanisha Richardson	Retha Williams	Rachel Carter	Kacie Hannon	Jami McDonald	Aubrey Smith
Erik Garcia	Lasseter Tractor Company	Connie J. Richter	Andrew Williams	Stewart Carter	Tanner Hargraves	Ronald McDowell	Joydan Smith
Maria De Lourdes Garcia	Heather M. Lawson	Allison Ridley	Tina M. Willingham	Veronica Carter	Yanah Hargrove	Kiwonna McIntyre	Carolyn Solomon
Angie Gay	Chelsie Lawton	Amanda Riggins	Belinda Wilson	Rayford Dwyane Causey	J'Kiya Harris	Tanada McKinnon	Enrique Soto
Sheryl and Rick Gehle	Debra Layfield	Luis Rios	Jessica Stone Wilson	Wendy Causey	Marie Harrison	James Terry McLemore	Tanya Spearman
Savannah Gerald	Lazarus of Moultrie	Sue Roach	MeLinda Wise	Kiana Cavin	Stanley Harrison	Princess Merritt	Donna Sprayberry
Barbara Gibson	Bethany Lewis	Dr. Charline Robinson	Susan S. Worsham	Susan and Michael Chastain	Harrod's, Inc.	Kaycee Merritt	Janet and Tom Stallings
Sonya Giddings	Rebecca Lewis	Jackie Rodgers	Brenda Wynne	Latrinda Christian	Terri Hart	Ariandra Millan	Megan E. Stalvey
Sandra and Ronald Goldstein	Shanvika Little	Stephanie Ross	Lisa and David Zeanah	Kristy Lynn Cohen	Mary Lynn and Chris Hayden	Lee Miller	John Stephens
Gordon Food Service	Marcia Littlefield	Elaine Russell	Kendale S. Zimmerman	John Cole	Alexis Henry	Terra Miller	Dale Storrusten
Damon Graham	Lockton	Courtney Russell		Tonya L. Cook	Shantika Herring	David Mincey	Helen S. Strickland
Ashley Grant	Teresa Longstreet	Thomas Salazar		Lonnie Eugene Cooper	Tylisha Hill	Alice Ann and Charles Moates Jr.	Beth and Lavon Stripling
Virginia Green	Kristen Loyd	Makenzie Sanders		Ta'Kirea Courtney	Phyllis Hill	Farolyn and Patrick Mobley	Amanda Stripling
Ricky Grier	Matthew Luke	Gailey Santos		Meredith Cox	Diane J. Hill	Caleb Moore	Heather P. Stripling
Donnie R. Grier II	Mandy A. Mackie	Shanna Saunders		Kelly Coyle	Shelia Hillie	Marsha Kirk Moore	Jonathan Struck
Christi Griner	Carolyn Marquis	Katelyn Scites		Evelyn Crews	Glenda Hines	Moultrie Bank & Trust	Margaret Ann Sumner
Hannah Gunter	Rose Mathis	Shirley Scott		Marcela Crumpton	Rachel Lynn Hinson	Moultrie Board of Realtors	Sumner Paving Company, Inc.
Julia Gutierrez	Carla McClure	Karell Scott		Gregory Cunningham	Jennifer Hollis	Moultrie Federated Guild	Cathy Sutton
Angela Hall	Kayla Louise McCollum-Kiser	Secure Records Solutions		Yashika Y. Curtis	Wynette and Danny Horne	Joan Murray	Rachel Sutton
Jennifer Rose Hamm	Susan McCoy	Shelly Dunham Sellers		Susan Cyrus	Reginia Howell	Elizabeth and Larry Neace	Tamala Swanson
Andrea Hand	Stacie McDaniel	Bhavin Shah		Morgan Daniels	Sharease Hughes	Christy Nelson	Mr. and Mrs. Robert C. Tadlock
Brandon Clint Handfield	Lia McIntosh	Lori Sherling		Cambrell Daniels	Brittany Hughes	Chelsea Newsome	Cathy and Wayne Tankersley
Evelyn Harrell	Keshona McIntyre	Samantha Ann Sikes		Marilyn Dauphin	Monica Irvin	Susan S. Newton	Willie Tatum
Hannah Hart	Ronald McNeil	Natasha Simmons		Cristi Davis	DeAnna and Gregg Isaacs	Ruby and James O'Kelley	Lisa Taylor
Nannette Harvey	Alexis Medrano	Melissa and Larry Sims		Debbie Davis	Dominique Jackson	Elizabeth and Larry Neace	Patricia Taylor
Sylvia Hawkins	Jameil A. Melvin	Eric Slaughter		Latoya Dawson	Latoya Jackson	Christy Nelson	Megan Terrell
Macy Hayes	Constance Mercer	Dena Smith		Mr. and Mrs. Bo DeMott	Wyllen Jackson	Chelsea Newsome	Mallory Owens
Rachel Haynes	Wendy Middlebrooks	Michael Ashley		Kimberly Dickens	Carla R. James	Susan S. Newton	Donna Paningsoro
Haley Henson	Beth Morris Middleton	Mackenzie Attebury		Heather Dismuke	Chatasha Jamison	Ruby and James O'Kelley	Ketrenia Parker
Becky Hernandez	Robert Miller	Sherry Bailey		Sharron Dodson	Elizabeth J. Jarvis	Elizabeth and Larry Neace	DiAundra Parks
Kisstina Nicole Herring	Britney W. Mobley	Shaun Soderstrom		Timothy Nathan Donalson	Fliss and Dan Jeter	Christy Nelson	Nancy Patterson
Sam Hester	Nanci Moltmaker-Brace	Mary M. Baker		Shari Dorminey	Verna Johnson	Chelsea Newsome	Pavo Volunteer Fire Department
Lisa and Scott Hewitt	Terrance L. Monroe	Jenifer J. Barajas		Jacqueline Dorsey	Nefeshia Johnson	Susan S. Newton	Paul J. Payne
Katina Hiers	Carmen Moore	Ana P. Barajas		Jennifer Douglas	Pam and Greg Johnson	Ruby and James O'Kelley	Erin Peavy
Betty Hill	Patsy Morris	Alice Barfield		Yadira Gaytan Durate	Marie Johnson	Elizabeth and Larry Neace	Kimberly Peavy
Nettie Hill	Erica Morton	Na'teya Barge - Singletary		David W. Durham	Kendrika Johnson	Christy Nelson	Erica Pecina
Misty K. Hobbs	Moultrie Made	Pamela Barna		Mr. and Mrs. Donnie Edwards	Cara Johnson	Chelsea Newsome	Suellen Parker Pitts
Tammy L. Horne	Moultrie-Colquitt County	Gina Barnes		Heather and Jonathan Edwards	Amanda Jones	Susan S. Newton	Amy Plymel
Gayle Horton	Yolanda Nathan	Barnes Family Properties, LLC		Tracy E. Edwards	Pam Jones	Ruby and James O'Kelley	Kindall Pollock
Valerie Howard	Niday Drug Company, LLC	Mailyn Suarez		Ben English	Kayla Jones	Elizabeth and Larry Neace	Jennie K. Poppell
John Howard	Nutanix	Justin Summerlin		Pamela C. Bass	Brandi Kautzman	Christy Nelson	Maria Powell
Jose Huerta	Tina Nuzzo	LaDonna Sutton		George W. Esther	Torkisha Keeley	Chelsea Newsome	Hallie Powell
Kelly and Timmy Hunter	Ashley Ortega	Staci Sutton		Hailey Fender	Nataly Prado	Susan S. Newton	Nataly Prado
Becky Hunter	Colleen Owens	Rhonda Swan		Lashauna Fisher	Toshika Key	Ruby and James O'Kelley	Alexis Price
Danielle Hutto	Jonathan Pace	Swartzentruber Medical Service, LLC		Connie and Mark Fleetwood	Darnecia King	Elizabeth and Larry Neace	Kayla Purvis
Destiny Jackson	Sarah Lyndsey Palmer	Megan W. and Brett Taylor		James Fletcher	Re'Neisha P. Kinsey	Elizabeth and Larry Neace	Rebekah Qualls
Nathan M. Jackson	Pate and Lester Company	Whitney Taylor		Nicole Flournoy	Linda Ladson	Elizabeth and Larry Neace	Kayla Quintero
Angela Jackson	Jason Peachey	Jemmie Thomas		Anna Foster	Callie Lane	Elizabeth and Larry Neace	Lindsey Reddick
Barbara James	Michelle Pearce	Brenda Kaye Tillman		Marlene and Jeff Fowler	Japonika Christina Largent	Elizabeth and Larry Neace	Terri Reeves
Camille James	Shannon Pendergraph	Kimberly Tomlinson		Brenda and Bill Foy	Keysha Laster	Elizabeth and Larry Neace	Donald Reeves
Matasha Jarvis	Taylor Perry	Latasha Renea Tucker		Olive Jean Freeman	Bridgette Felicia Lawson	Elizabeth and Larry Neace	Carol Remtema
Joe Kem's Market	Cassandra Peterson	Amy Turner		Tenita L. French	Heather Lewis	Elizabeth and Larry Neace	Noe Reyes Sanchez
Yolonda Johnson	Keisa Pettis	Steven Vance		Keila Fuentes	Jasmine Linder	Elizabeth and Larry Neace	Jacqueline Rice
Cheyenne Johnson	Cindy Phillips	Jill Vest		Blanca Futch	Rachel Lindsey	Elizabeth and Larry Neace	Ilesha Richardson
Marianne Johnson	Tina Pierson	Melissa Vido		Clara Gammage	Jennifer Lindskoog	Elizabeth and Larry Neace	Connie G. Roberson
Jennifer Johnson	Darby Chad Pipkin	Katherine Walker		Darianna Garcia	Brakeira Linton	Elizabeth and Larry Neace	Vickey Roberts
Sara Johnson	Christal Pitts	Sandra Walker		Alisha Bodiford	Alexandrea Livings	Elizabeth and Larry Neace	Doris Roblero
Tangular Johnson	Donna Plymel	Kayla Walters		Sheila Garland	Elisabeth Lopez	Elizabeth and Larry Neace	Andrea Rodriguez-Martinez
Chelsea Johnson	Misty Pope	Abby Watkins		Susan Gause	Erica Lopez	Elizabeth and Larry Neace	Sherri Rogers
Janell Johnson	Alex Portier	Ashley K. Watson		Jeffrey Gay	Kim Lovett	Elizabeth and Larry Neace	Brenda Roseborough
				Johnny Gay			

2023 Bronze (\$100)

Kayla Adcock
Leslie Aguilar
Yadiaris Alba Torres
Christine Albritton
Ellen Alderman
Victoria Allegood
Karen Allegood
Nicole Allen
Tommy Allen
Citlaly Ramos Alvarez
Felecia Applewhite
Isaias Arenas
Mary Arnold
Michael Ashley
Mackenzie Attebury
Mary Anne Babcock
Sherry Bailey
Molly and Justin Baker, MD
Mary M. Baker
Jenifer J. Barajas
Ana P. Barajas
Alice Barfield
Na'teya Barge - Singletary
Pamela Barna
Gina Barnes
Barnes Family Properties, LLC
S. Kay Bass
Pamela C. Bass
Rebecca Bass
Beth and Quentin Bates
Jo Beth and David Beard
Katie and Grant Bell
Rachael Benitez
Daphne A. Bennett
Tanya Bennett
Bennett Broilers
Sheryl Benzinger
Lydia and Gary Black
Edward Keith Blalock
Dorothy Nell Blount
Kayla Blount
Monica Boatright
Alisha Bodiford
Cheyenne Bowe
Toni M. Boyd
Mary Ann Brasington
Jonathan Bright



Matney Family

Founders’/Business Partners

FOUNDER’S SOCIETY

These donors chose by their generous commitment to support and improve healthcare services in our region and want to help assure the citizens have access to exceptional healthcare. Members of the Founder's Society donated \$10,000 or more in a one-time gift or a paid pledge over three years. This is lifetime recognition and gifts accumulate toward high giving levels.

Legacy Member (\$250,000+)

Beverly and DW Adcock, MD
Laura and Ricky Dell
Teresa and Steve Hufstetler
Rosalind and Jimmy Jeter
Joyce and James Kirk, II
Carrie and Judd Lasseter
Cindy and Tony Lasseter
Jill and Jim Matney
Farolyn and Patrick Mobley
Vereen Family Foundation

Gina and Bryan McDonald
Brooke and Lee McGill, MD
Martha Faye Murphy
Edna and Hugh Oliver
Danielle and Kent Posey, MD
Latoya and Frederick Powell, MD
Trupti and Shamb Purohit
Amber and Jacob D. Schwartz, MD
Janet and Brooks Sheldon
Drs. Pallavi Luthra and Will Stembridge
Charlotte and Doug Strange
Elizabeth and Michael Strickland
Harriett and James Whelchel
Drs. Betty Koukis and Cheau Williams

Founding Pillar (\$100,000)

Molly and Justin Baker, MD
Drs. Catherine and Michael Brown
Debbie and Robert Brown, MD
Chaltsy and Monty Carlton, III
Anne and Monty Carlton, Jr.
Maddie and Nathan Cashwell
Judy and Andrew Cordista, MD
Angela and Brian Duck
Susan and Billy Edwards
Denise and Wayne Edwards
Jeannie and Thomas Estes, MD
Ann G. Friedlander
Jennifer and D.Q. Harris, MD
Cynthia and Emerson Harrison, MD
Dr. Amber and Will Holt
Dawn and Scott Johns
Witemba Kabange, MD
Drs. Laura and Jim Keith
Sybil and Randy Knight
Steven Lazarus
Diane and Jim Lowry

Key Founder (\$50,000)

Nancy and Simon Adames, MD
Samantha and Steve Allen
Lauren and Travis Bailey, DO
Celina and Cecil Barber
Dr. Elaine and Mr. Steve Barber
Jeannette and Chris Bazal, MD
Deryl and C. Victor Beadles
Ellen and Duncan Beard
Cara and Joseph Beavers, MD
Julie and Andy Bhavnani
Megan and Bill Bishop
R. Norris Bishop
Lisa and James Bivins
Drs. Roxana Aguirre and Mauricio Carballo
Fraleay Carlton
Christine and Matthew Clifton
Gayla and Bobby Cobb
Renee and Dale G. Crosby
Sharon H. and Marc DeMott

Staci and Tony DeRosso
Kelly and Kelly Dixon
Lori Movsovitx and Todd Edlin
Mitzi and Donnie Edwards
Wayne C. Evans
Cynthia and Paul Everett
Yva and Jonathan Fairley, MD
Erica and Matthew Filer
Cheryl and Kirk Friedlander
Nicole Lowry Gilbert
Stacy and John Griffin
Dr. and Mrs. Ayman Hakim
Deborah and Merrill Hicks Jr., MD
JoBeth and Plenn Hunnicutt
Nancy and Roger W. Jackson
Fliss and Dan Jeter
Pam and Greg Johnson
Adam Jones, MD
Melanie and Dan Kerrigan
Jewell and Daniel D. Kidder
Chad Klar, MD
Camila and Sean Knowles
Teresa and Willard Lasseter
Antonella and Joel Lopes, MD
Melissa and Christopher Medders
Nancy and Howard Melton, MD
Danielle and Preston Mobley
Lauren and McClellan Mobley
Lesa and Anthony Moser, MD
Alex and Joshua S. Newton, MD
Lauryn and Mark Niday
Beckie and Shain Nowland
Melanie and Claude Owens
Lisa and Louie Perry

Krysta and Cory Porteus, DO
Maureen and Billy Ray Price, MD
Gail and Bob Qurnell
Robin and John Lee Redding, DMD
Lynn and Chad Roberts
Delfino Rodriguez
Denise and Scott Romanowski
Andrea and Stan Savage
Rhonda and Kirby Smith, DO
Amanda and Curt Starling, MD
Kristi and John Paul Sutton
Ellen and James Sutton
Anne and Gary Swartzentruber, MD
Marisa and Todd Taylor
Elizabeth and Michael Thompson
Becca and Richie Turner
Ken Turnipseed
Jana and Lane Wear
Christa and Joseph Weathers
Woodwin Weeks, DO
Shana Rae and Mark Wertz
Erica and Daniel R. York, DO
Li and William Zhu, MD
Dena and Jimmy Zinker

Sustaining Founder (\$25,000)

Lynette and Raymond Aldridge, MD
Beth and Quentin Bates
Linda and Seth Berl, MD
Mary and Joe Beverly
Donna and Michael Brady
Beth and Chas Cannon
Drs. Melissa and Jared Cardwell
Jacqueline and David Carle, MD
Catherine and Matthew Carter, DMD
Karen S. Carver

Brenton and Teresa Conner
Evelyn P. Cope
Whitney and Greg Costin
Drs. Brittany and Daryl Crenshaw
Anna and Franky Davis, MD
Whitney and Daniel Dell
Joshua Dietzer, MD
Stephanie and Matthew Dozier
Carlton S. Duggan Family
Catie Duskin, DO
Courtney and Davis Edwards
Bonnie and Bill Edwards
Heather and Jonathan Edwards
Tommie and John Edwards
Renee Ellenberg
Megan and Gates Ford
Christine and Jon V. Forehand
Angela D. and Dennis W. Futch
Karen and Matt Gould
Jessica and Nick Graves, MD
Jessica and Scotty Green
Dr. Michael Haney
Joanne J. Heckman
Carol and David Herndon
Tammy and Buddy Horne
Mandy and Phillip Jackson
Tamara Maquita Johnson, MD
Amanda and Ashley Johnson
Barbara and Lynn Jones, Sr.
Kelly and Lyndy Jones
Jessica and Kent Jordan
Shelia and Greg Key
Juanita and Perry LaConte, MD
Kaylan and Ben Lancaster
Mandy and Gary Mackie
Katherine and Danny MacQuirter
Priyanka and Venu Madhipatla, MD
Camila and Michael McLean
Linda and Ron Mead
Dr. Linnea Mehls and Mr. Ryan Moore

Patti and Stewart Merdian
Judy and Mark Mobley
Britney and Jake Mobley
Cori and Stephen Norman
Betty Manning Ott
Dena and Bob Pearce
Rebecca and John Peters
Frank Ramsey Pidcock, III
Julie and Cole Posey
Lara and Scott Price
Linda Reese
Cheryle and Roy Reeves
Toni Leigh and Daniel Riddle
Jessica and Jeffrey Rivenbark
Tracy and Brian Robinson
Wesley and Devin Rogers
Christine and Raul Santos, MD
Jeff and Darby Sewell PhD
Meg and Wilson Sheldon
Lynnette and James Small, MD
Alexa and Brandon Smith
Gail and Terry Sparkman
James Sizemore and David WM. Spence
Michele and Lawrence Ukpogon, DO
Jolanta and Arunas Urbonas
Molly and Jonathan Vaughan
Anne and Will Vereen
Harvey Vereen
Teron K. Verma, MD
Alicia and David Waller, MD
Dottie and Hugh B. Ward, Dmin

Emily and Sam Watson
Patti and Marcus Wells
Nancy and George Williams
Amy and Michael Williams
Brenda and Martin Williams
Rae and Curtis Wilson
Stella and Eric Wingate
Yvonne and Mike Wyche
Dr. Maureen and Steve Yearta
Kim and Jeff Young
Lisa and David Zeanah

Founder (\$10,000)

Heather and Ron Adams
Diane and S.R. Adcock, MD
Judy and David Adcock, II MD
Carol and Alfred Aguero, DMD
Abida and Mueez Ahmed
Kathy and Miron Allen
Ophelia Allen
Charlie Allen
Payson Allen
Leslie and Scott Alterman
Alana and Levi Anderson
Margaret Anne and Mick Anderson
Bryan Arwood
Cindy and Kermit Ary Jr., DPM
Angela and Matt Atkins
Joy and Jimmy Ausburn
Dale and Terry Baker
Lia and Joe Baker
Carol and Chuck Bannister
Christine L. Barber
Victoria L. Barber
Wendy and Brad Barber
Leo T. Barber, Jr.
Mildred Barlow
Dawn and Jeffery Barnett, DMD
Latrell Barnwell
Beth and Richard Bass
Tracey Bastiaans, DO
Amanda and Bud Beaty
Anna Bennett
Hengameh and Keivan Beroukhim
Jimmy Bloodworth
Ellen and Bob Blumenthal
Jan and Gary Boley
Carol and Jim Boyd
Beth and Cliff Bridges
Staci and Matt Brill
Jane H. Brown
Marie and Keith Brown
Tonya and Bert Brown
Edie and Leon Brunty
Symantha and Dave Buckridge
Ashley and Will Burt
Barnwell Calhoun
Jo Anne and K.G. Cardin
Eloise Bell Carlton
Anna and John Carlton
Robert Montague Carlton, IV
Nelson Castillo, MD
Odelle Jordan Cato
Stephanie D. Causbey
Matthew Cavin
Julianne and Saxby Chambliss
Pamela and Joey Chapman
Vera Clark
Bonnie and Jim Clayton
Rhonda and Todd Close
Jessica and Kristoff Cohran

Julianne and Joseph Coleman
Mica and Lanny Copeland, MD
Michelle Covington
Drew and Kelly Cravey
Tammy and Terrence Croyle, MD
Kappy and William J. deButts, III
Chamagne and Dominic DeSalvo
Samah Moussa and Akache Dimassi
Shannon and Donald Dixon
Linda Dorough
Rhonda and Daniel Dunn
Casey G. Durden
Margo and Shiel Edlin
Charles Evans
Kate Evans
Emily and Griffin Evans, Jr.
Gracie and Mitchell Faucette
Charlotte and Christopher Franklin
Scott Friedlander
Pamela and Stephen Gannon
Beth and Hamilton Garner
Ida Gentry
Courtney L. Gilbert
Morgan T. Gilbert
Kelly and Aaron Goff
Kathy and Miles Graivier
Leah and C. Mark Griffin
Betty and Howard Hall, Jr.
Margie and Mike Haney, MD
Cameron and John Harper
Rainmeya and Terrance Harris
Walter E. Harrison, Jr.
Karen G. Hart
Alyson Moler and Brandon Hayes
Patricia and Douglass Heckman
Anne and Russ Henry
Kim and Marcus Herrington
Nell Hiers
Dabney and Samuel Hollis
Patricia and Michael Hopkins, OD
Vivian and Donald Horne Sr.
Lauren and Rob Howell
Jessica and James Huffman, III, MD
Phyllis Hughes
Lee Hunter
Kelly and Timmy Hunter
Laura Bryant and John Hutton
Yasamin and Humza Ilyas
April and Jerry Ingle
DeAnna and Gregg Isaacs
Staci and Matt Brill
Jane H. Brown
Marie and Keith Brown
Tonya and Bert Brown
Edie and Leon Brunty
Symantha and Dave Buckridge
Ashley and Will Burt
Barnwell Calhoun
Jo Anne and K.G. Cardin
Eloise Bell Carlton
Anna and John Carlton
Robert Montague Carlton, IV
Nelson Castillo, MD
Odelle Jordan Cato
Stephanie D. Causbey
Matthew Cavin
Julianne and Saxby Chambliss
Pamela and Joey Chapman
Vera Clark
Bonnie and Jim Clayton
Rhonda and Todd Close
Jessica and Kristoff Cohran

Stephanie and Paul Leonard
Staci and Joel Libowsky
Hope Littleton
Carolyn and Gary Lodge, MD
Kayla and Josh Long
Karen and Joe Macrina
Carolina and Michael Magat, DO
Sam Mangum
Traci and Fred Martin
Jabari I. J. Martin, MD
Ashley and Chad Massey
Surekha Satyanarayan Matcha
Henry Matney
Sarah Matney
Ohud and William Matney
Savannah and Ashley McGowan
Karen and Dale McGregor, MD
Keena and Jerry Milligan
Rebecca and John Mark Mobley, III
Michelle Morrell
Hailey and Caleb Morris
Edna Moye
Justin Murphy
Rufus H. Murphy
Justin B. Murphy
Erick Myrti, MD
Jean and Rex Neal
John Neel
Susan S. Newton
Lynn and Michael Nixon
Martha and Edwin Nunnery
Dr. Sarah Nuzzo and Mrs. Allison Parrish
James O'Kelley
Lori and Andy O'Neal
Genelle T. O'Neal
Melinda and William S. Ortwein
Oswald, son of mascot UGA V
Nancy and C. Mathew Paine, MD
Neema and Darshak Pandya
Sonal and Dhaval Patel
Marian Antoinette Patterson, MD
Judy and Vincent Payne
Donna and Jerry Peljovich
Barbara A. Peoples
Sandra and Craig Perry
Frank Ramsey Pidcock, IV
Tina Pierson
Casimira and James Pittman
Shannon and Robby L. Pitts
Marla and James Poole
Patricia Powell
Amy and Tim Powers
Catherine and Alan Prince
Esteban Quintero and Erica Paez
Zuri Evans and Qammar Rashid
Danielle and Chad Raszler
Amanda and Joey Riggins
Thomas E. Romanowski
Katrina and Robert Sasine, MD
Lauri and Stephen Scarrow
Shannon and Craig Schlottman
Amy and Michael Sharon, MD
Angela and Chad Sheldon, MD
Lanekel and Qiheng Shen, MD
Betty Shiflett
Lisa and Herbert Short
Melissa and Larry Sims
Vicki and Jeffrey Skorput
Jackie and Ricky Sloan
Joann and Jimmy Sloan
Nancy and Johnny Slocumb

Kim and Russ Smith
Madis and Harry Spires
Brooke and Robert Spruill, MD
Janet and Tom Stallings
Stacey and Christopher Stanton
Mary and Chip Stapleton
Mandi and Scottie Strickland
Rebecca and William Stripling
Megan and Brett Taylor
Alexis and R.J. Taylor
Mr. and Mrs. David M. Tharp
Marina and Michael Thayer, MD
Lynn and Chris Thomas
Sarah and Derrick Thornton, OD
Robin and Terry Tillman
Vickie Geibel and Nicki Trawick
Carolynne Turner
Ret Turner
Ellis A. Turnipseed
Greer E. Turnipseed
Sally and David Tyndall
Mary Ann and Brad Tyson
Jessica and Jody Tyson
Georgianna and John Valentino
Mr. and Mrs. W.C. Vereen, Jr.
Barbara Bunn Vereen
Erie and Frank Wagner
Sheila Sesan and Mitchell Waldman
Mandy and Kelly Walker
Sandra and Terry Walker
Kathryn E. Ward
Amanda M. Ward
Dr. Lisa Rudolph-Watson and Benjamin S. Watson
Wilda and Grady Weeks
Alice and Hoyt H. Whelchel, Jr.
Kristi and Brandon Whitaker
Peggy and Timothy Whitley
Dr. and Mrs. Michael Whittle
Jana and Ben Wiggins
Sally and Winston Wilfong, MD
Martha Williamson
Susan and Richard Willis
Caroline and George Wommack
Cristy and Chris Woodell
Lara and Joseph Woods
Margaret and Scotland Wright
Wendy and Dave Wyatt
Darlene and Eugene Zebley

BUSINESS PARTNERS

These donors know a strong healthcare system is vital to a community for attracting industry and valuable employees for their business. Members of Business Partners donated \$10,000 or more in a one-time gift or a paid pledge over three years. This is lifetime recognition and gifts accumulate toward high giving levels.

Legacy Business Partner (\$250,000)

Ameris Bank
Colquitt Regional Employees
Colquitt Regional Volunteers
Lasseter Tractor Company
The First, A.N.B.A.
Waldo Deloache Charitable Trust Foundation

Founding Business Partner (\$100,000)

Colony Bank
Robert Hutson Chrysler Dodge Jeep & Ram Trucks
Larry Franklin Properties, Inc.

Key Business Partner (\$50,000)

Bank of America
Chancy Drugs
First National Bank of Moultrie
H&W Farms, LLC
Anna M. and James Kirk Foundation
Pentas Wealth Management
Quality Employment Service
Raymond James and Associates, Inc.
Turning Point Care Hospital
Whelchel & Carlton, LLP

Sustaining Business Partner (\$25,000)

Baker Farms Produce, LLC
Baker Funeral Home
Brasfield & Gorrie, LLC
Canfor Southern Pine
Draffin & Tucker, LLP
Duggan Horne Foundation
FMI Printing & Distribution
Mobley Gin Company
Mobley Greenhouse, Inc.
Network Technology Solutions
Owens & Minor
Rainey Used Cars, Inc.
Robert Hutson Ford Lincoln
Siemens Medical Systems
Southwest Georgia Insurance Services
Thomasville Surgery Center
TMPartners, PLLC
UHS Management Services
Windham Brannon
Windstream Communication

Business Partner (\$10,000)

Ashley's Business Solutions, Inc.
Barber Contracting Company
A.C. Blount Concrete Service
Broadleaf Trucking
Bull Durham Insurance & Investments, Inc.
Cannon Financial Strategists
Colquitt Loan
Commercial Banking Company
Coopercraft Communications, Inc
Credit Bureau Associates of Georgia
Gregory A. Garcia, JD, LLM, PC
Hurst Boiler & Welding Co. Inc.
Hutchinson-Traylor Insurance
InterMed Group
JE Dunn Construction
JCI General Contractors
K.G. Cardin & Sons Farms
KLG Atlanta, Inc.
Management Services Network, LLC
Metz Culinary Management
Moultrie Eye Center
Moultrie Junior Woman's Club, Inc.
Osceola Supply, Inc.
Radiology Associates of Moultrie, LLC
Secure Records Solutions
South Georgia Banking Company
St. Jude Medical
Sterling Diagnostics Imaging, Inc.
Taylor Benefit Resource, Inc.
telaGen, LLC
Valdosta Mechanical Company, Inc.
Wal-Mart Foundation
Winn-Dixie
Zaxby's

VISIT GIVING PAGE



Colquitt Regional Volunteer Services Donation

Georgia HEART Donor List

Last year, Colquitt Regional Medical Center was grateful to receive an impressive sum of over \$3.97 million thanks to the Georgia Rural Hospital Tax Credit program. 278 taxpayers from Georgia chose to defer their 2023 state income tax obligations, directing their support towards our hospital. In return, they received a full 100 % state income tax credit on their state tax returns.

These significant contributions were earmarked for constructing our Medical Education Center, which officially opened in November. This center is the hub for a comprehensive medical training complex, accommodating diverse learners such as physicians, nurses, paramedics and nurse assistants. Furthermore, the facility is home to the Georgia South Medical Residency clinics, specializing in family medicine and psychiatry.

- Nancy and Simon Adames, MD

Heather and Ron Adams

Kathy and Miron Allen

Samantha and Steven Allen

Ameris Bank

Ashley's Business Solutions

Angela and Matthew Atkins

Karen and Robert Bailey

Lauren and Travis Bailey, DO

Baker Funeral Home

Molly and Justin Baker, MD

Carol and Chuck Bannister

Celina and Cecil Barber

Dr. Elaine and Stephen Barber

Lei Ann Barnes

Dawn and Jeffery Barnett, DMD

Tracey Bastiaans, DO

Beth and Quentin Bates, III

Jeannette and Christopher Bazal, MD

Ellen and Duncan Beard

Cara Cousino and Joseph Beavers, MD

Anna Bennett

Melissia Bennett
- Julie and Andy Bhavnani

Meg and Bill Bishop

R. Norris Bishop

Jimmy Bloodworth

Carol and Jim Boyd

Donna and Michael Brady

Drs. Catherine and Michael Brown

Tonya and Bert Brown

Deborah and Robert Brown, MD

Edith and Leon Brunty

Ashley and Darrell Bryant

Symantha and Dave Buckridge

Will and Ashley Burt

Rachel and William Cagle, MD

Laura and Jacob Calloway

Beth and Chas Cannon

Drs. Melissa and Jared Cardwell

Jacqueline and David Carle, MD

Fraley Carlton

Amy Carter

Catherine and Matthew Carter, DMD

Madeline and Nathan Cashwell

Matthew D. Cavin

Julianne and Saxby Chambliss

Pam and Joey Chapman

- Christine and Matthew Clifton

Jessica and Kristoff Cohran

Colony Bankcorp, Inc.

Teresa and Brenton Conner

Judith and Andrew Cordista, MD

Whitney and Greg Costin

Michelle Covington

Kelly Crump and Ben Drew Cravey

Drs. Brittany and Daryl Crenshaw

Vicki and John Crew

Renee and Dale Crosby

Mark Davis

Anna and Franklin Davis, Jr. MD

Michael Dawson, MD

Laura and Ricky Dell

Whitney and Daniel Dell

Sharon and Marc DeMott

Staci and Tony Derosso

Chamagne and Dominic DeSalvo

Kelly and Kelly Dixon

Linda Dorough

Stephanie and Matthew Dozier

Angela and Brian Duck

Casey Durden

Catie Duskin, DO

Lori and Todd Edlin

Courtney and Davis Edwards

Denise and Wayne Edwards

Susan and Billy Edwards

Renee Ellenberg

Margaret Ellison, MD

Jennie and Thomas Estes, MD

Cynthia and Paul Everett

Yva and Jonathan Fairley, MD

Nancy Fitch

Susan and John Folds

Megan and Michael Ford

Christine and Jon Forehand

Cheryl and Kirk Friedlander

Ida Gentry

Nicole L. Gilbert

Kelly and Aaron Goff

Karen and Matthew Gould

Jessica and Steven Graves, MD

Jessica and Scotty Green

Stacy and John Griffin

H & W Farms, LLC

Mary and Roy Hall

Cynthia and Emerson Harrison, MD

Joanne Heckman

Patricia and Douglass Heckman

Anne and Russell Henry

Carol and David Herndon

Kimberly and Marcus Herrington

Carolyn and Tommy Hewitt

Dabney and Samuel Hollis

Donald and Holli Holmes

Dr. Amber and Will Holt

Tammy and James Horne

Jessica and William Huffman, MD

JoBeth and Plenn Hunnicutt

Wheeler Hunnicutt

Tammy and Rodney Hunter

April and Jerry Ingle

Nancy and Roger Wayne Jackson

Brian James

Dawn and Scott Johns

Tamara Johnson, MD

Kelly and Lynn Jones

Jessica and Kent Jordan

Pleasant Jowers

- Witemba Kabange, MD

Drs. Laura and James Keith

Melanie and Dan Kerrigan

Shelia and Greg Key

Holly and Kevin King

Chad Klar, MD

Camila and Sean Knowles

Joyce Barber and Robert Kryder

Juanita and Perry LaConte, MD

Heidi and John LaMarca

Kaylan and Ben Lancaster

Thomas Laseter

Lasseter Tractor Co., Inc.

Steve Lazarus

Stephanie and Paul Leonard

Krystal and Keith Lindsey

Hope Littleton

Kayla and Josh Long

Dexter Love, MD

Kim Lovett

Mandy and Gary Mackie

Katherine and Gordon MacQuirter

Priyanka and Venu Madhipatla, MD

Michael Magat, DO

Shannon and Michael Magbalon, MD

Sam Mangum

Carolyn and Patrick Marlow

Carolyn Marquis

Kimberly Mathis

Henry Matney

Jill and Jim Matney

Sarah Matney

Gina and Bryan McDonald

Brooke and Lee McGill, MD

Savannah and Ashley McGowan

Shrilene and Ron McNeil

Linda and Ronald Mead

Melissa and Chris Medders

Nancy and Howard Melton, MD

Patti and Stew Merdian

Britney and Jacob Mobley

Dr. Linnea Mehls and Ryan Moore

Pellie and Gadston Moore

Michelle Morrell

Morris, Manning & Martin, LLP

Lesa and Tony Moser, MD

Justin Murphy

Yolanda Nathan

Alex and Josh Newton, MD

Lauryn and Mark Niday

Lynn and Michael Nixon

Beckie and Shain Nowland

Allison Parrish and Sarah Nuzzo, MD

Melanie and Claude Owens

CaroleAnn Padgett

Marian Patterson, MD

Dena and Bob Pearce

Sydney Pendleton

Lisa and Louie Perry

Sandra and Craig Perry

Rebecca and John Peters

Tina Pierson

Plastic Surgery Associates of Valdosta, PC

Marla and James Poole

Krysta and Cory Porteus, DO

Julie and Cole Posey

Danielle and Kent Posey, MD

Mona and Steve Powell

Patricia Powell

Latoya and Frederick Powell, MD

Lara and Scott Price

- Maureen and Billy Ray Price, MD

Trupti and Shamb Purohit

Erica Perez and Esteban Quintero

Radiation Oncologists South-East, PC

Robin and John Lee Redding, DDS

Linda Reese

Christopher Reynolds

Toni Leigh and James Riddle

Jessica and Jeffrey Rivenbark

Lynn and Chad Roberts

Traci and Brian Robinson

Delfino Rodriguez

Denise and Scott Romanowski

Lindy Sanderson

Christine and Raul Santos, MD

Sean Sauls

Lauri and Stephen Scarrow

Amber and Jacob Schwartz, MD

Wells Scott

Selective Communications Inc.

Jeff and Darby Sewell, PhD

Shilpa Patel and Bavin Shah

Amy and Michael Sharon, MD

Meg and Wilson Sheldon

Lanekl and Qiheng Shen, MD

Robin and Alex Shivers

Jimmy and Joan Sloan

Nancy and Johnny Slocumb

Alexa and Brandon Smith

Kim and Russ Smith

Rhonda and Kirby Smith, DO

Gail and Terry Sparkman

David Wm. Spence

Emily and Jake Stamey

Amanda and Curt Starling, MD

Dr. Pallavi Luthra and Will Stembridge

Willard Stembridge

Charlotte and Doug Strange

Amanda and Scottie Strickland

Elizabeth and Michael Strickland

Carie and Stephen Summers

Ellen and James Sutton

Kristi and John Paul Sutton

Anne and Gary Swartzentruber, MD

Alexis and RJ Taylor

Marisa and Todd Taylor

Megan and Brett Taylor

Terry and Joe Baker Farms, LLC

Thacker Dermatology

The First Bank

Lynn and Chris Thomas

Elizabeth and Michael Thompson

Robin Tillman

Jackie and Kenny Tolliver

Becca and Richie Turner

Ken Turnipseed

Leslie Tyson

Michele and Lawrence Ukpong, DO

Jolanta and Arunas Urbonas

Molly and Jonathan Vaughan

Sandra and Terry Walker

Dottie and Hugh Ward, Dmin

Emily and Sam Watson

Lisa Rudolph-Watson, MD and Ben Watson

Jana and Lane Wear

Christa and Jody Weathers

Woodwin Weeks, DO

Shana and Mark Wertz

Kristi and Brandon Whitaker

Timothy and Peggy Whitley

- Christine and John Whitney

Jana and Ben Wiggins

Amy and Michael Williams

Drs. Betty Koukis and Cheau Williams

Nancy and George Williams

Rae and Curtis Wilson

Stella and Eric Wingate

Cristy and Chris Woodell

Wendy and Dave Wyatt

Yvonne and Michael Wyche

Stephen Yarbrough, DO

Steve and Maureen Yearta, EdD

Erica and Daniel York, DO

Angela and Jeffery Young

Darlene and Eugene Zebley

Li Zhang and Wenhui Zhu, MD

Dena and Jimmy Zinker



All Care Donation to Edwards Cancer Center

events

Trunk
or Treat



Ladies
Night Out
at the
Movies



Hospital
Week



Morning
at the
Movies



COLQUITT
REGIONAL
MEDICAL CENTER

colquittregional.com

